



**FIRST NATIONS'
Emergency Services**

Residential Command and Control *(Fire Officer Development Training)*

March 3 & 4, 2012 – Lillooet, BC

This course will define what a first due company officer needs to address upon arrival at the fire scene. You will receive training on how to conduct an initial size up. Incident scene action plans will be reviewed to assist the fire officer and fire fighters to produce a plan for implementing an initial action plan.

The course goal is to enhance fire suppression command and control skills by leading fire suppression teams with effective tactics for resource short departments.

Course Objectives – By the end of this training, the learner will be able to:

- Give an initialize Up Report
- Assume Command
- Institute an Initial Action Plan
- Transfer Command
- Effectively manage a Fire Suppression Team
- Use an Accountability System

Who should attend?

This course is intended for **Volunteer Fire Officers and Senior Firefighters** who will be assuming leadership roles on the fire ground. You should have experience and good working knowledge of fire ground operations at the volunteer level.

Workshop date and location

This workshop will be held on **March 3 & 4, 2012** at the **Lillooet Fire Department Station** located at **570 Main Street** in Lillooet BC.

Time:

010:00am to 4:30pm Saturday and 8:30am to 3:30pm Sunday, (Lunch will be provided)

How do I register?

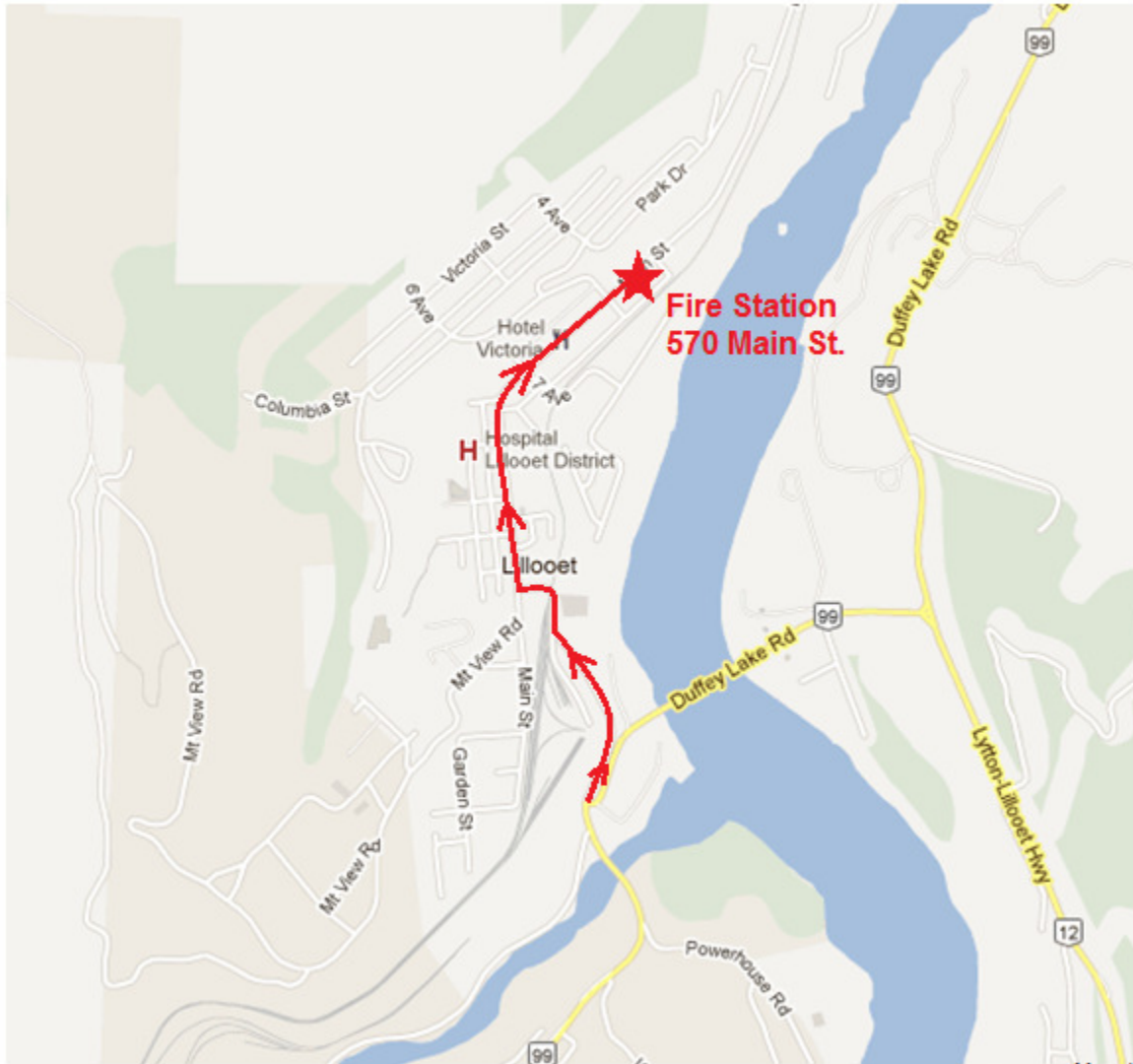
Please fill out a “**Fire Fighter Training Registration Form**” and specify which date and location of training you would like to attend. Next fax the form into the FNESS North Vancouver office at (604) 669-9832 in advance to the course start date. These forms can be downloaded off of our **Fire Services Training** web page.

If you have any questions please do not hesitate to contact our office at 604 669-7305 or toll free at 1-888-822-3388.

Sincerely,
First Nations' Emergency Services Society
Fire Services Department

Driving Information

Lillooet Fire Department, 570 Main Street, Lillooet BC.



The driving instruction are:

- As you come up the hill to access the downtown main core of Lillooet, keep to your right and follow Main Street headed north. The fire station is located at the intersection of 6th Avenue and Main Street. Across from a large Church and the Mile 0 Motel.