

# Provincial Wildfire Status Update

Date: Sept. 23, 2021

Operational Period: Sept. 23-30, 2021



## Prov Prep Level

1

## Provincial Wildfire Coordination Officer

Name: Brad Litke  
Email: [BCWS.PWCO@gov.bc.ca](mailto:BCWS.PWCO@gov.bc.ca)

## Provincial Information Officer

Name: Taylor Colman  
Email: [FIREINFO@gov.bc.ca](mailto:FIREINFO@gov.bc.ca)  
Office: (250) 312-3051

### 1. Provincial Summary

Fire activity and danger ratings across B.C. continue to decrease. As of this morning, there are 159 active wildfires and nearly 90% of those are Under Control. This downturn is expected to persist and as more precipitation is received and more mop-up work is completed, the fires remaining on the landscape will soon be called Out. This report is the final Provincial Wildfire Status Update of 2021.

### 2. Weather

A broad ridge of high pressure will continue to provide dry, sunny conditions for the southern half of the province along with near to slightly above seasonal temperatures on Friday. Further north, a strong frontal system will deliver heavy rain to the North Coast on Friday with light precipitation amounts pushing over the Coast range and into the Northwest. The Prince George Fire Centre will remain mainly dry but cloudy with seasonally cool conditions. The ridge gradually weakens and shifts eastwards Saturday opening the door to a southwest flow delivering increased cloud cover across the province. While precipitation will be confined to the Coast, the Cariboo and the central Rockies, temperatures will trend downwards while relative humidities rise resulting in lowering fire weather indices across all fire centres. A progressive fall-like pattern is expected to persist with a regular succession of disturbances intermixed with short lived ridges.

### 3. Fire Counts

	Natural	Human	Undetermined	Total
Currently Burning	119	18	22	159
New Fires (past 24 hours)	0	1	1	2
New Fires (past 7 days)	3	5	4	12

	2021	2020	10 Year Average
Total Fires	1,604	625	1,278
Total Hectares	867,723	14,387	337,942

### 4. Resources

Resource levels are adequate for anticipated needs.  
Fire Origin and Cause (FOC): 2 requests, 1 assigned, 1 specialist and 1 trainee available.

### 5. Provincial Airtanker Centre

Prep Con: 0  
Targets: 0  
Groups\* Assigned in Province: 0  
Groups Assigned Out of Province: 0  
Groups Out of Service: 0  
Groups Available: 0  
\*A tanker group refers to a group of skimmers and/or retardant-carrying aircraft (depending on their tank capacity) plus one Birdog.

### 5. Fire Prohibitions and Restrictions

	Cat 3	Cat 2	Campfires	Area Restrictions
COASTAL				
NORTHWEST				
PRINCE GEORGE				
KAMLOOPS	X	X		X
SOUTHEAST	X (Boundary Zone)	X (Boundary Zone)		X
CARIBOO				

For more information, visit the [Fire Bans and Restrictions](#) webpage.

### Cariboo FC

Activity Level: 1  
Current Fires: 22  
Fires to Date: 262  
Hectares to Date: 129,590  
Wildfires of Note: 0

The Cariboo Fire Centre is [rescinded the Category 2 and Category 3 open fire prohibitions](#) at noon on Wednesday, Sept. 22, 2021.

### Coastal FC

Activity Level: 1  
Current Fires: 13  
Fires to Date: 210  
Hectares to Date: 7,097  
Wildfires of Note: 0

### Kamloops FC

Activity Level: 1  
Current Fires: 36  
Fires to Date: 449  
Hectares to Date: 496,992  
Wildfires of Note: 0

The Kamloops Fire Centre is [rescinding their Category 2 and Category 3 open fire prohibitions](#) effective at noon on Friday, Sept. 24, 2021.

### Northwest FC

Activity Level: 1  
Current Fires: 5  
Fires to Date: 58  
Hectares to Date: 28,644  
Wildfires of Note: 0

### Prince George FC

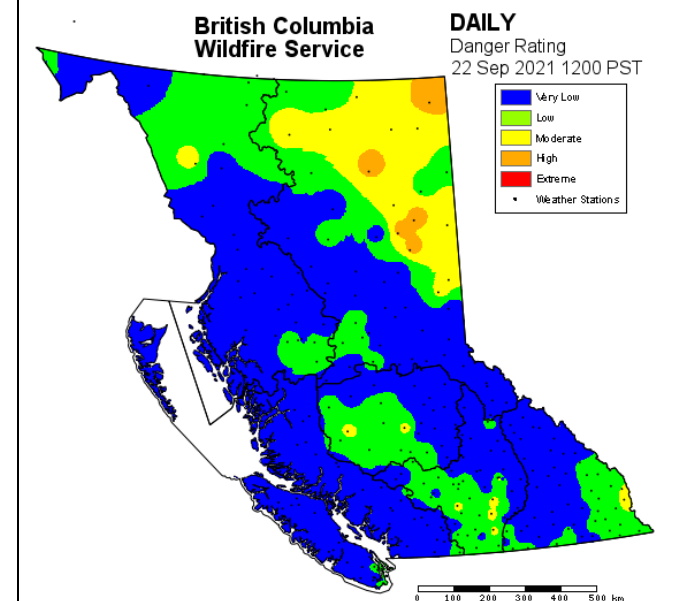
Activity Level: 1  
Current Fires: 46  
Fires to Date: 268  
Hectares to Date: 128,308  
Wildfires of Note: 0

### Southeast FC

Activity Level: 1  
Current Fires: 37  
Fires to Date: 357  
Hectares to Date: 77,088  
Wildfires of Note: 0

The Southeast Fire Centre is [rescinding their Category 2 and Category 3 open fire prohibitions](#) in the Boundary fire zone effective at noon on Friday, Sept. 24, 2021.

### 6. Fire Danger Rating



[BCWildfire.ca](http://BCWildfire.ca)



[BC Forest Fire Info](#)



[@BCGovFireInfo](#)

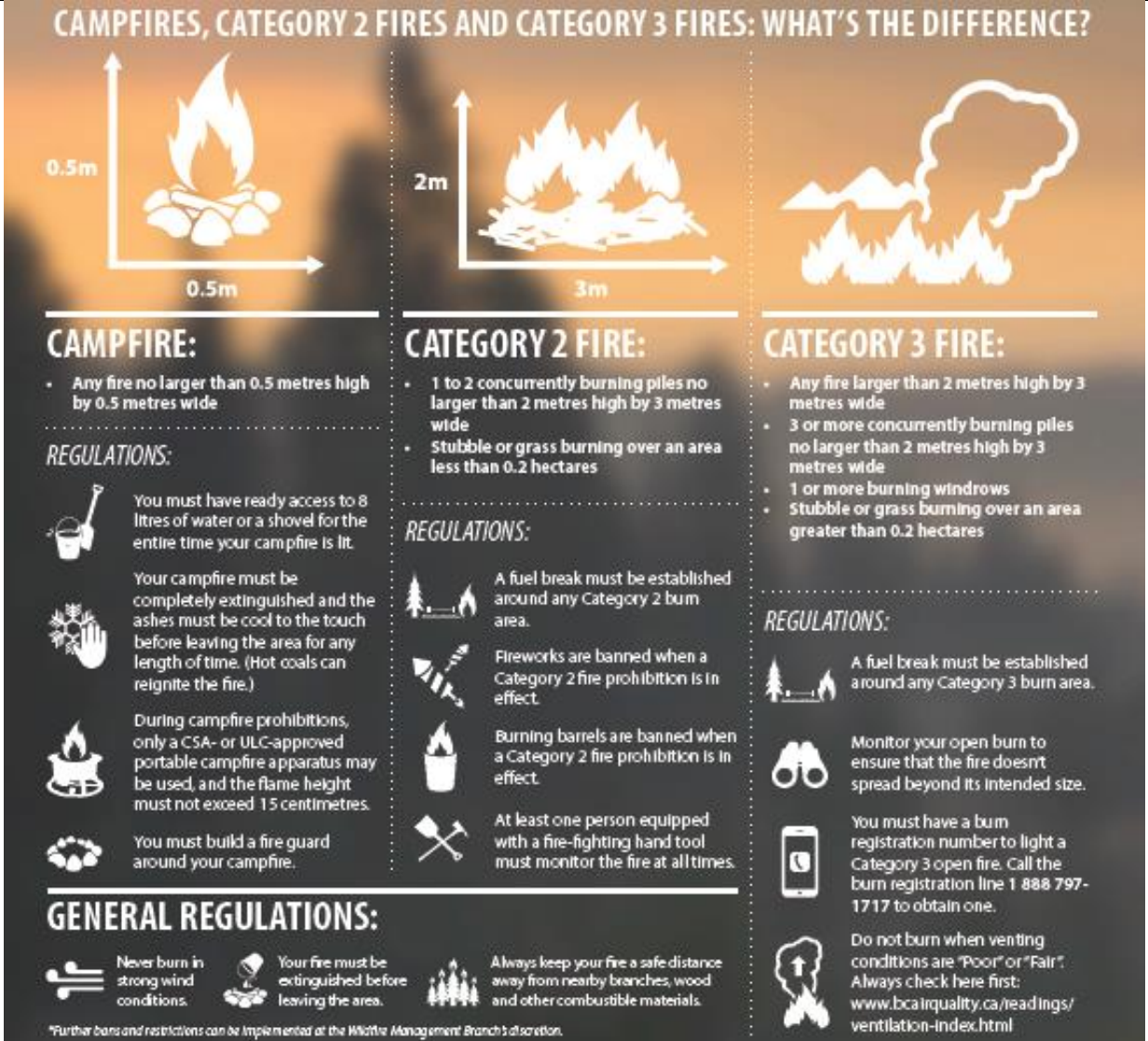


[FireSmartBC.ca](#)



Download the BCWS Mobile App on [Android](#) and [iOS](#) devices

# Definitions:

Activity Levels	Fire Danger Rating
<p><b>Level 1: (Exporting)</b></p> <ul style="list-style-type: none"> <li>- Low to normal fire activity; no additional resource support is anticipated</li> <li>- Adequate resources to deal with anticipated fire demands</li> <li>- Monitor and anticipate possible support for non-wildfire provincial emergencies</li> <li>- Fire centre resources may be deployed to other zones, fire centres, and out of province</li> </ul> <p><b>Level 2: (Exporting/Holding)</b></p> <ul style="list-style-type: none"> <li>- There is an increase in fire activity; fire centre resources are adequate to meet their demands</li> <li>- Monitor and anticipate possible support for non-wildfire provincial emergencies</li> <li>- Limited resources may be deployable to other zones, fire centres, or out of province</li> </ul> <p><b>Level 3: (Holding)</b></p> <ul style="list-style-type: none"> <li>- There is an increase in fire activity; fire centre may not be able to meet local resource demands</li> <li>- Resources from other zones / fire centres may be requested to assist activity</li> <li>- Long term strategic planning becomes critical in determining what resources are needed where</li> <li>- Fire Centre staff on standby based on anticipated needs</li> </ul> <p><b>Level 4: (Holding/Importing)</b></p> <ul style="list-style-type: none"> <li>- The fire centre is experiencing a high level of fire activity</li> <li>- Fire centre resources will need to be supplemented from other zones / fire centres / type 2 crews</li> <li>- Out of province resource requests for specific or critical resources may be required if provincial resource capacity is not able to handle fire demands</li> </ul> <p><b>Level 5: (Importing)</b></p> <ul style="list-style-type: none"> <li>- The fire centre is experiencing very significant fire activity, and/or extreme fire behaviour; heavy demands on provincial and fire centre resources are occurring and anticipated to continue</li> <li>- Resource capacity is supplemented with staff from Wildfire TEAMS, other Ministries, the forest sector, Fire Departments, and type 2/3 resources</li> </ul>	<p><b>Low:</b> Fires may start easily and spread quickly but there will be minimal involvement of deeper fuel layers or larger fuels.</p> <p><b>Moderate:</b> Forest fuels are drying and there is an increased risk of surface fires starting. Carry out any forest activities with caution.</p> <p><b>High:</b> Forest fuels are very dry and the fire risk is serious. New fires may start easily, burn vigorously, and challenge fire suppression efforts. Extreme caution must be used in any forest activities. Open burning and industrial activities may be restricted.</p> <p><b>Extreme:</b> Extremely dry forest fuels and the fire risk is very serious. New fires will start easily, spread rapidly, and challenge fire suppression efforts. General forest activities may be restricted, including open burning, industrial activities and campfires.</p>
<p align="center"><b>Fire Stages of Control</b></p> <p><b>Out of Control:</b> A wildfire that is not responding – or only responding on a limited basis – to suppression action, such that the perimeter spread is not being contained.</p> <p><b>Being Held:</b> With the resources currently committed to the fire, sufficient suppression action has been taken so that the fire is not likely to spread beyond existing or predetermined boundaries under the prevailing and forecasted conditions.</p> <p><b>Under Control:</b> The fire has received enough suppression action to ensure no further spread of the fire.</p> <p><b>Out:</b> The fire has been extinguished.</p>	<p align="center"><b>Fire Bans and Prohibitions</b></p>  <p><b>CAMPFIRES, CATEGORY 2 FIRES AND CATEGORY 3 FIRES: WHAT'S THE DIFFERENCE?</b></p> <p><b>CAMPFIRE:</b>      • Any fire no larger than 0.5 metres high by 0.5 metres wide  <b>REGULATIONS:</b>      • You must have ready access to 8 litres of water or a shovel for the entire time your campfire is lit.      • Your campfire must be completely extinguished and the ashes must be cool to the touch before leaving the area for any length of time. (Hot coals can reignite the fire.)      • During campfire prohibitions, only a CSA- or ULC-approved portable campfire apparatus may be used, and the flame height must not exceed 15 centimetres.      • You must build a fire guard around your campfire.</p> <p><b>CATEGORY 2 FIRE:</b>      • 1 to 2 concurrently burning piles no larger than 2 metres high by 3 metres wide      • Stubble or grass burning over an area less than 0.2 hectares  <b>REGULATIONS:</b>      • A fuel break must be established around any Category 2 burn area.      • Fireworks are banned when a Category 2 fire prohibition is in effect.      • Burning barrels are banned when a Category 2 fire prohibition is in effect.      • At least one person equipped with a fire-fighting hand tool must monitor the fire at all times.</p> <p><b>CATEGORY 3 FIRE:</b>      • Any fire larger than 2 metres high by 3 metres wide      • 3 or more concurrently burning piles no larger than 2 metres high by 3 metres wide      • 1 or more burning windrows      • Stubble or grass burning over an area greater than 0.2 hectares  <b>REGULATIONS:</b>      • A fuel break must be established around any Category 3 burn area.      • Monitor your open burn to ensure that the fire doesn't spread beyond its intended size.      • You must have a burn registration number to light a Category 3 open fire. Call the burn registration line 1 888 797-1717 to obtain one.      • Do not burn when venting conditions are "Poor" or "Fair". Always check here first: <a href="http://www.bca.inquality.ca/readings/ventilation-index.html">www.bca.inquality.ca/readings/ventilation-index.html</a></p> <p><b>GENERAL REGULATIONS:</b>      • Never burn in strong wind conditions.      • Your fire must be extinguished before leaving the area.      • Always keep your fire a safe distance away from nearby branches, wood and other combustible materials.</p> <p><small>*Further bans and restrictions can be implemented at the Wildlife Management Branch's discretion.</small></p>